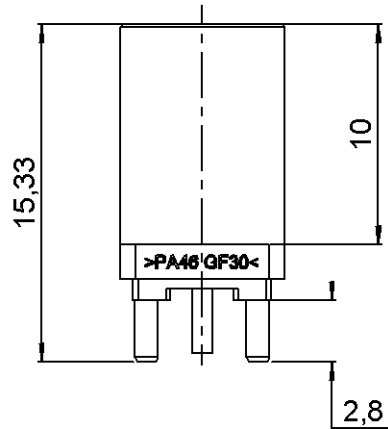


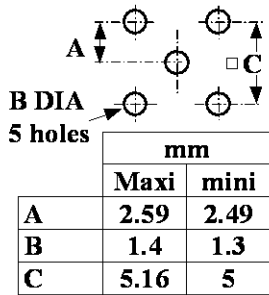
STRAIGHT PCB RECEPTACLE

R197.150.Z07

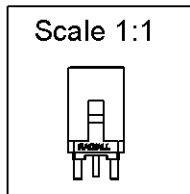
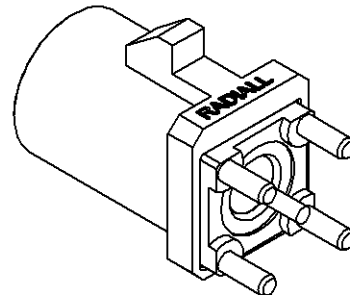
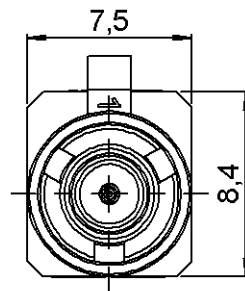
Series : **SMB CARLOCK**



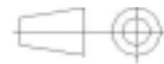
PANEL CUT OUT



CODING Z



All dimensions are in mm.



COMPONENTS	MATERIALS	PLATING (µm)
BODY	BRASS	-
CENTER CONTACT	BRASS	GOLD 0.5 OVER NICKEL 2
OUTER CONTACT	-	-
INSULATOR	-	-
GASKET	PTFE	-
OTHERS PARTS	PA 46 GF30 (STANYL TE200F6) COLOR	-
-	WATER BLUE(RAL5021)	-
-	-	-
-	-	-

Issue : 0706 A

In the effort to improve our products, we reserve the right to make changes judged to be necessary.



STRAIGHT PCB RECEPTACLE

R197.150.Z07

Series : **SMB CARLOCK**

PACKAGING

SPECIFICATION

QS9000 A 00

Standard	Unit	Other
100	'W' option	Contact us

ELECTRICAL CHARACTERISTICS

ENVIRONMENTAL

Impedance	50	Ω
Frequency	0-4	GHz
VSWR	1.05 + 0,0080	x F(GHz) Maxi
Insertion loss	0.03	\sqrt{F} (GHz) dB Maxi
RF leakage	57	- F(GHz) dB Maxi
Voltage rating	500	Veff Maxi
Dielectric withstanding voltage	1000	Veff mini
Insulation resistance	1000	M Ω mini

Operating temperature	-40/+110	$^{\circ}$ C
Hermetic seal	NA	Atm.cm3/s
Panel leakage	NA	

OTHER CHARACTERISTICS

Assembly instruction **NA**

Others :
COAX TRANSMISSION LINE ONLY

MECHANICAL CHARACTERISTICS

Center contact retention		
Axial force (before soldering)	5	N mini
Axial force (after soldering)	10	N mini
Torque	NA	N.cm mini
Recommended torque		
Mating	NA	N.cm
Panel nut	NA	N.cm
Mating life	100	Cycles mini
Weight	1,2400	g

Issue : 0706 A

In the effort to improve our products, we reserve the right to make changes judged to be necessary.

